

LiveWall[®]

Invisible and Small-Grille Speakers

2022 Product Planner

**Free domestic ground
shipping on all orders.**

New LW802 Small Grille. Big Performance.

A tiny Tru-Flush Grille hiding a
full-range speaker with
integrated subwoofer.

**Easy to install. Outrageous
output.**

For authorized
LiveWall dealers

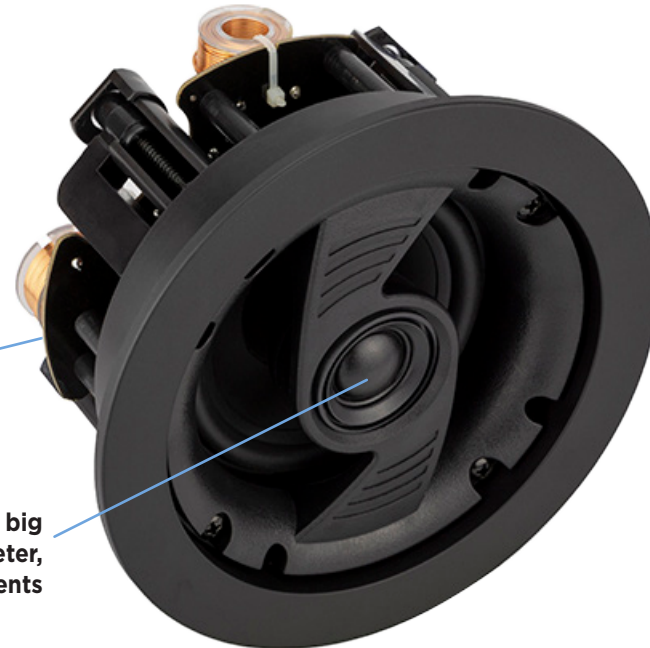


Small Footprint Speaker

PC4

\$200 each

Finally, a small-footprint in-ceiling speaker you can be proud to install. Impressive performance, bass to 80 Hz, and wide dispersion for ease of placement.



PC4

About the size of a small light fixture

No skimping on components — big magnet, 1" silk-domed tweeter, beefy crossover components

Ships with both round and square grilles.



Model	PC4
MSRP	\$200 each
HWD	6-1/2" across x 3-1/2" deep
Accessories	PC4 Bracket

LW802 Integrated Speaker

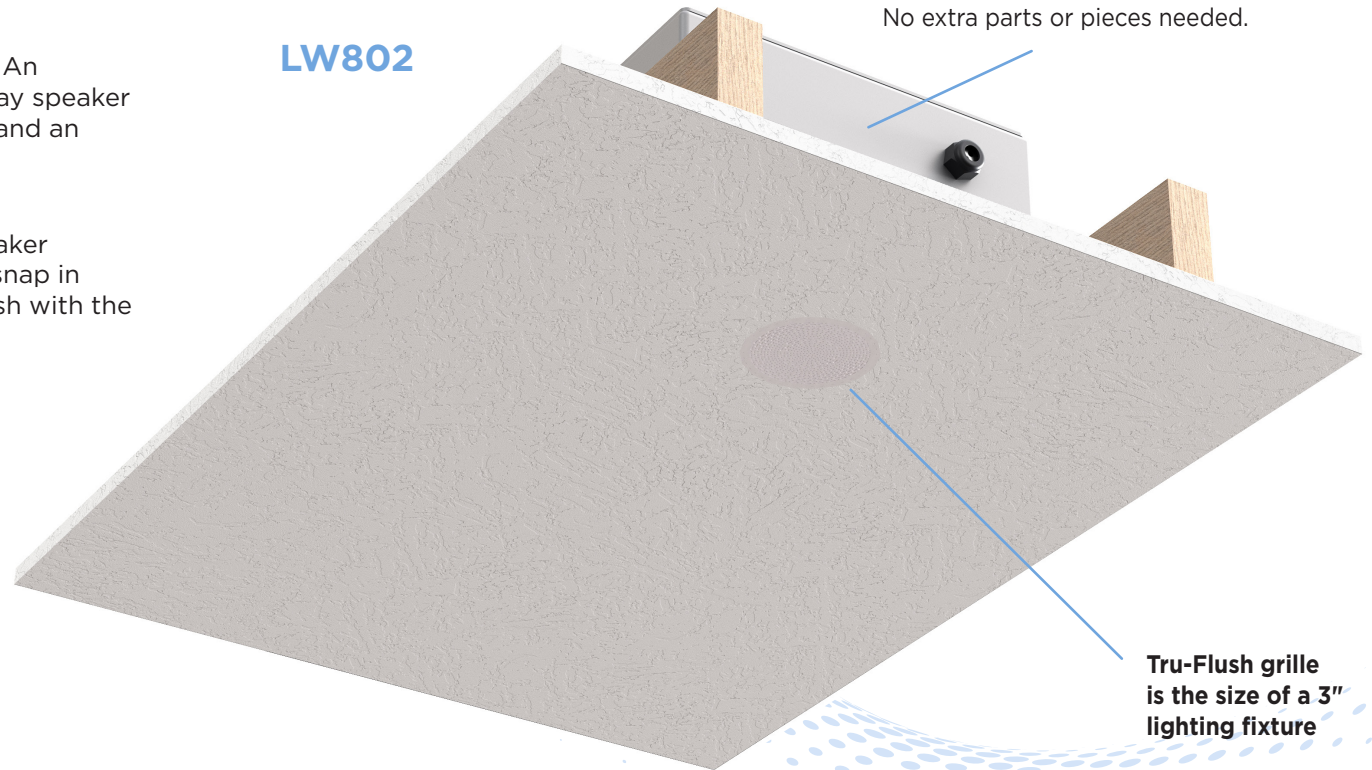
\$2,800 each

Small grilles meets big performance. An impressive, full-range integrated 2-way speaker system with subwoofer-level output and an impressive high-frequency unit.

Easily the best looking in-ceiling speaker available. Magnetic Tru-Flush grilles snap in place after mudding, sit perfectly flush with the ceiling. No shadows, no protrusions.

LW802

Single integrated speaker ships complete.
No backbox, no separate mounting kit.
No extra parts or pieces needed.



Model	LW802	Custom Printed Grille
MSRP	\$2,800 each	\$250 each, minimum 4 grilles per design
LWD	26 x 13 x 8"	

LiveWall[□]

Small Grille Speaker

LW802

\$2,800 each

Tru-Flush grille is the size of a 3" lighting fixture

Powerful vented subwoofer section with bass to 35 Hz

Integrated mounting system fits all ceilings

Full-range system uses one amplifier channel

Fully enclosed high-frequency driver with broad dispersion for room-filling sound

Fits drywall 1/2" and thicker

Audiophile crossover components with built-in protection circuitry

Machined aluminum cabinetry is stiff, thin, and fire-rated



LW802

LW802



Choose round or square Tru-Flush grille

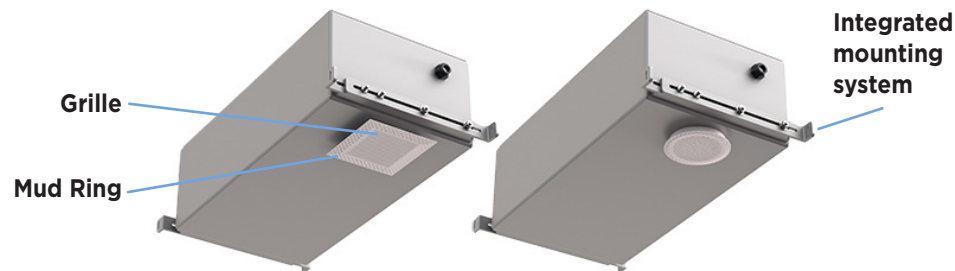
Elegant, paintable grilles have a unique perf pattern. Grilles and associated mounting hardware ship separately, are included in price.

Personalized grille designs available

Choose any pattern, any picture, any artwork for a one-off paintable grille. 4-piece minimum.

Installation Method

1. Install cabinet with integrated mounting rails
2. Drywall and mud
3. Pop on magnetic Tru-Flush grille



LW1210

\$650 each

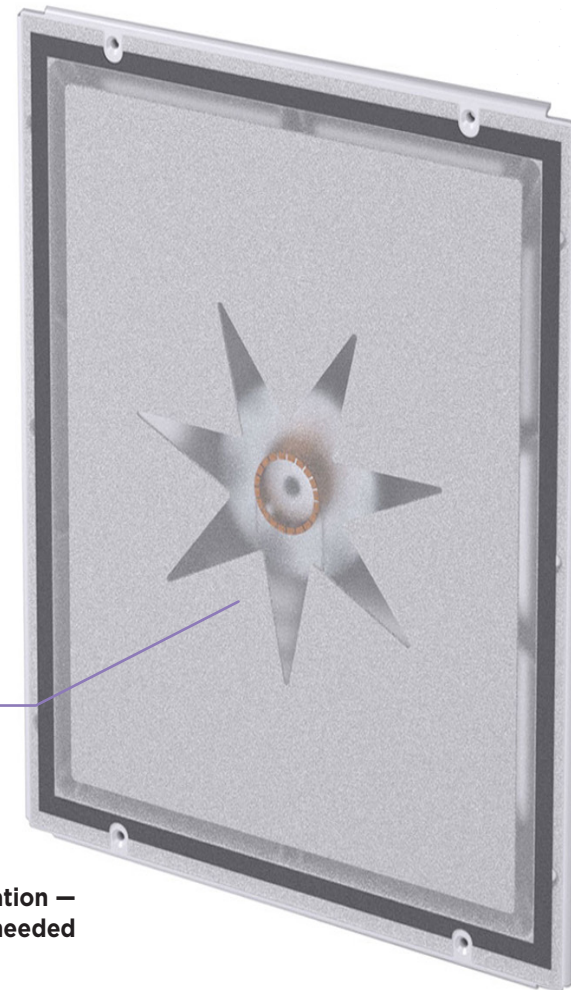
Our third generation invisible speaker once again redefines the category, with improved sensitivity, smoother tonal balance, and greater impact. A patented 2-layer constrained diaphragm provides bass to 65 Hz, and high frequencies to 20k. No other invisible products on the market come close to the performance of Live-Wall.



LW1210 Backbox available

Model	LW1210
MSRP	\$650 each
HWD	10 x 12-9/16 x 2-5/8"
Accessory	LW1210 Box

LW1210



High power handling — plays louder than 8" in-ceiling speakers

Full range operation — no subwoofer needed

LiveWall[□]

Invisible Speakers

LW1220 AI

\$1,250 each

Our first constrained aluminum diaphragm design brings extra clarity and more impactful bass to the Live-Wall line. Greater sensitivity and high power handling means more music without relying on a large amplifier.

**Bass to 48 Hz for
full-range performance**

**Industry-leading performance
in an easy-to-install footprint**

**Aluminum diaphragm for greater
impact, tighter imaging**

Model	LW1220 AI
MSRP	\$1,250 each
HWD	16-3/8" x 13-1/4" x 2-7/8"
Accessory	LW1220 Box



LW1220 AI

LiveWall[®]

LW1220 AI

\$1,250 each

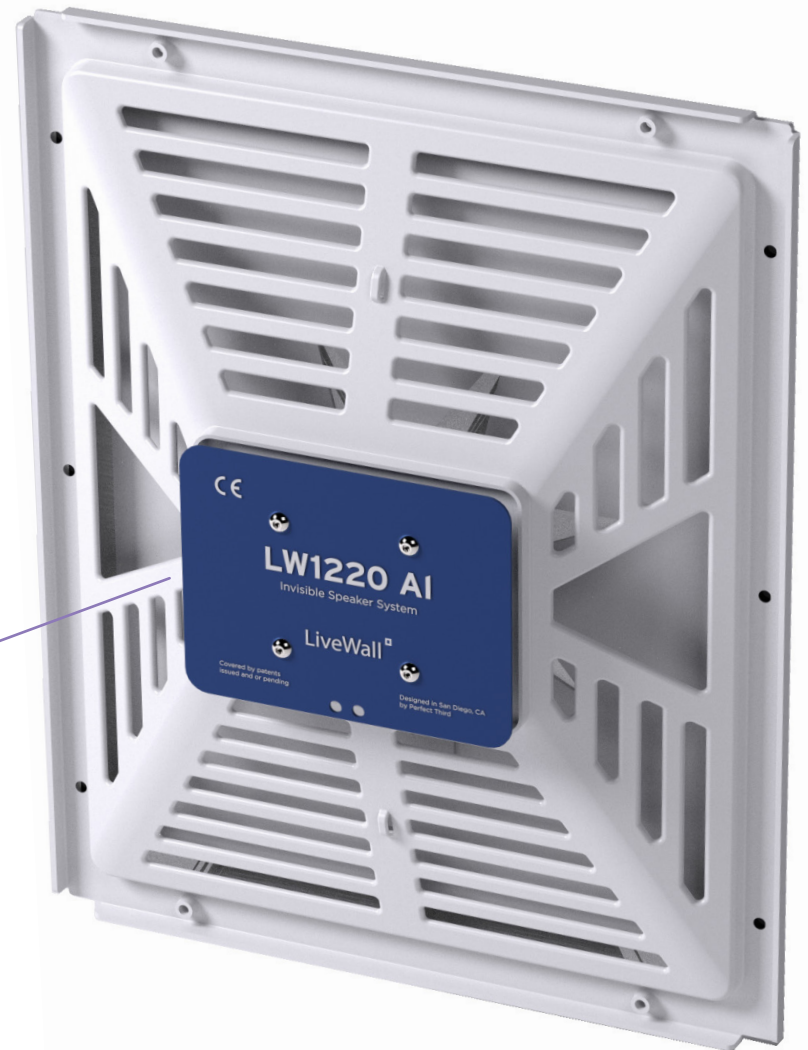
With performance that rivals high-end bookshelf speakers, the LW1220 AI leaves competitive invisible speakers far behind. Our patented constrained-layer design sandwiches two diaphragm materials — aluminum, and foamed polymers — each tuned for different areas in the frequency range. The result is a smooth, lifelike presentation you'd expect from a high-end bookshelf speaker.

High-precision molded frame
for decades of performance
without warping or
deformation

Hybrid ceramic/neodymium
motor structure for impressive
control and output

LW1220 Backbox available

Invisible Speakers

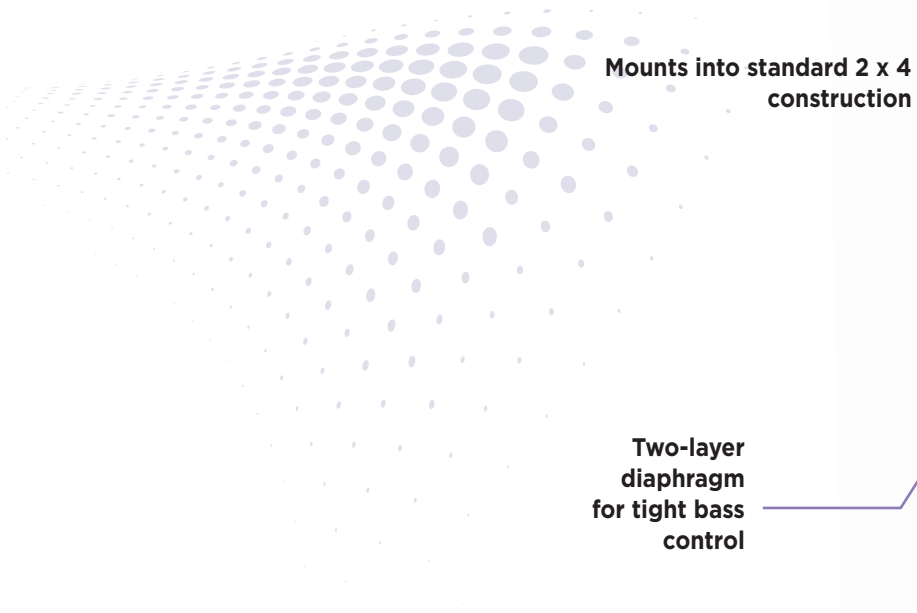


LW1220 AI

LWSub and Integrated Backbox

\$2,400 per set

We designed the LWSub to bring our revolutionary invisible planar diaphragm technology to the reproduction of lower frequencies. Mounted neatly into standard 2 x 4 construction, with an integrated backbox, the LWSub generates distortion-free bass without impeding décor.



Mounts into standard 2 x 4 construction

Two-layer diaphragm for tight bass control

Installs within a sealed backbox to controls bass response and reduce bleed-through to adjoining rooms

Aluminum frame construction

LWSub

Model	LWSub
MSRP	\$2,400 each
HWD (mounted)	14-1/8 x 45 x 3-3/8"
Included	LWSub Box

Pricing

LiveWall[®]

Small Grille Speakers					
	PC4	PC4 Bracket	LW802	Mono Adaptor	70V Adaptor
	Small footprint in-ceiling	12-pair Masterpack	Full-range small grille speaker. Choose round or square grilles when ordering.	Stereo summing circuit	70V transformer
MSRP	\$200 each	\$40 pair	\$2,800 each	\$50 each	\$50 each

Invisible Speakers						
	LW1210	LW1210 Box	LW1220 AI	LW1220 Box	LWSub	LWSub Box
	3rd Generation, 2-layer design	For LW1210	3rd Generation, Aluminum face	For LW1220 AI	Invisible Subwoofer	Subwoofer backbox (required)
MSRP	\$650 each	\$300 each	\$1,250 each	\$300 each	\$2,400 set	Included with LWSub



Terms & Conditions

Integrator-Based Lifetime Warranty

LiveWall will repair or replace, for any LiveWall Integrator in good standing, any defects in materials or workmanship that occurs in normal use of a LiveWall speaker system without charge for parts. Excluded from this warranty is damage resulting from abuse, misuse, accidents, shipping, repairs, or modifications by anyone other than an authorized LiveWall service representative.

This warranty is void if the speaker system was not installed by an authorized LiveWall service provider.

This warranty gives the Integrator specific legal rights, and the Integrator may have other rights that vary from state to state.

In case of service, please contact your authorized LiveWall service provider.

If that is not possible contact us at:

619-800-0924

Sales@Live-Wall.com

Prices Are Subject To Change

LiveWall

Box 910651, San Diego, CA 92191 619-800-0924

Prices and specifications subject to change .

Speakers protected by patents issued and/or pending. ©2022 LiveWall, LLC.