

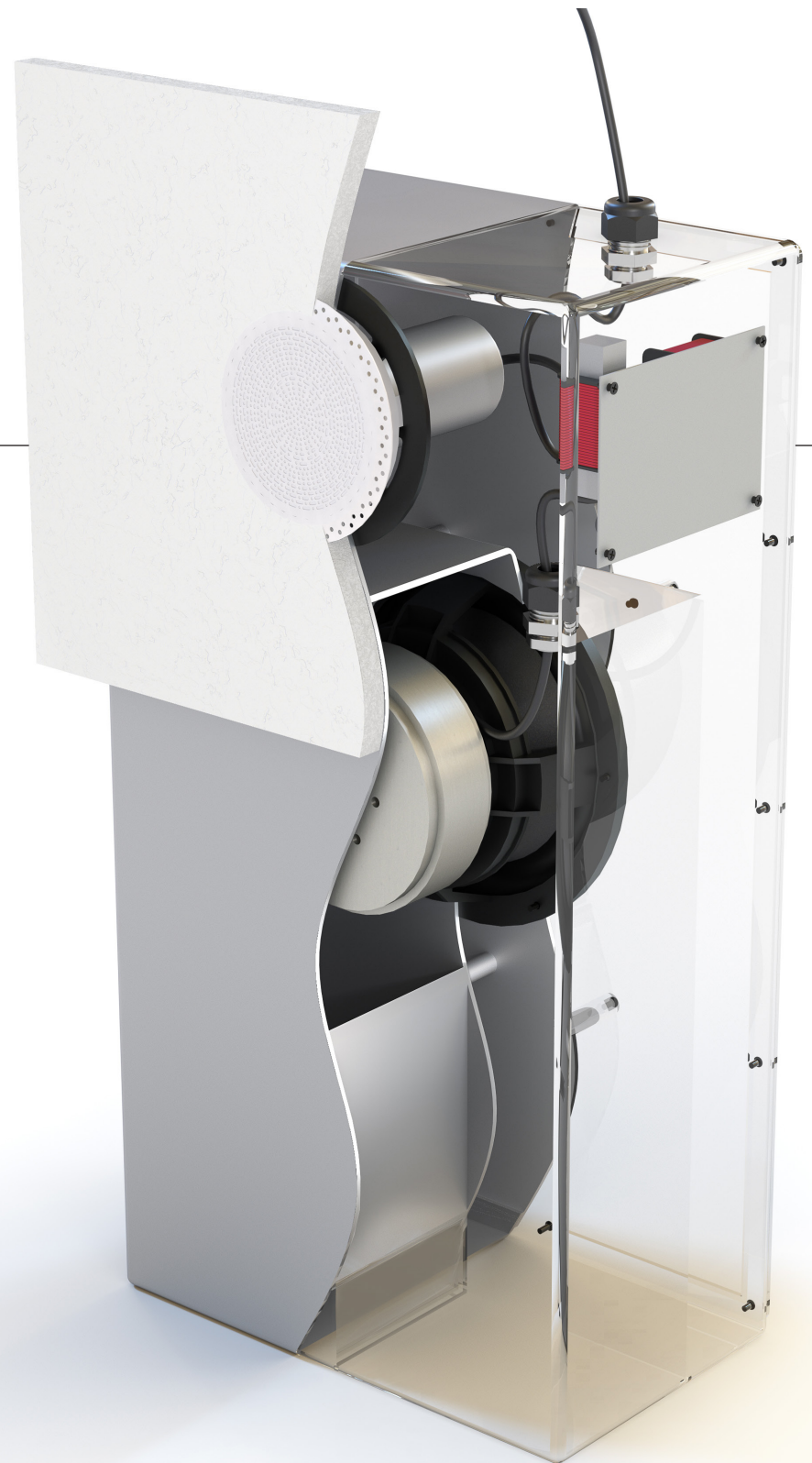
LiveWall[®]

2025 Product Planner

LW802 Small Grille. Big Performance.

A tiny Tru-Flush Grille hiding a full-range speaker with integrated subwoofer.

Easy to install. Outrageous output.



For authorized
LiveWall dealers

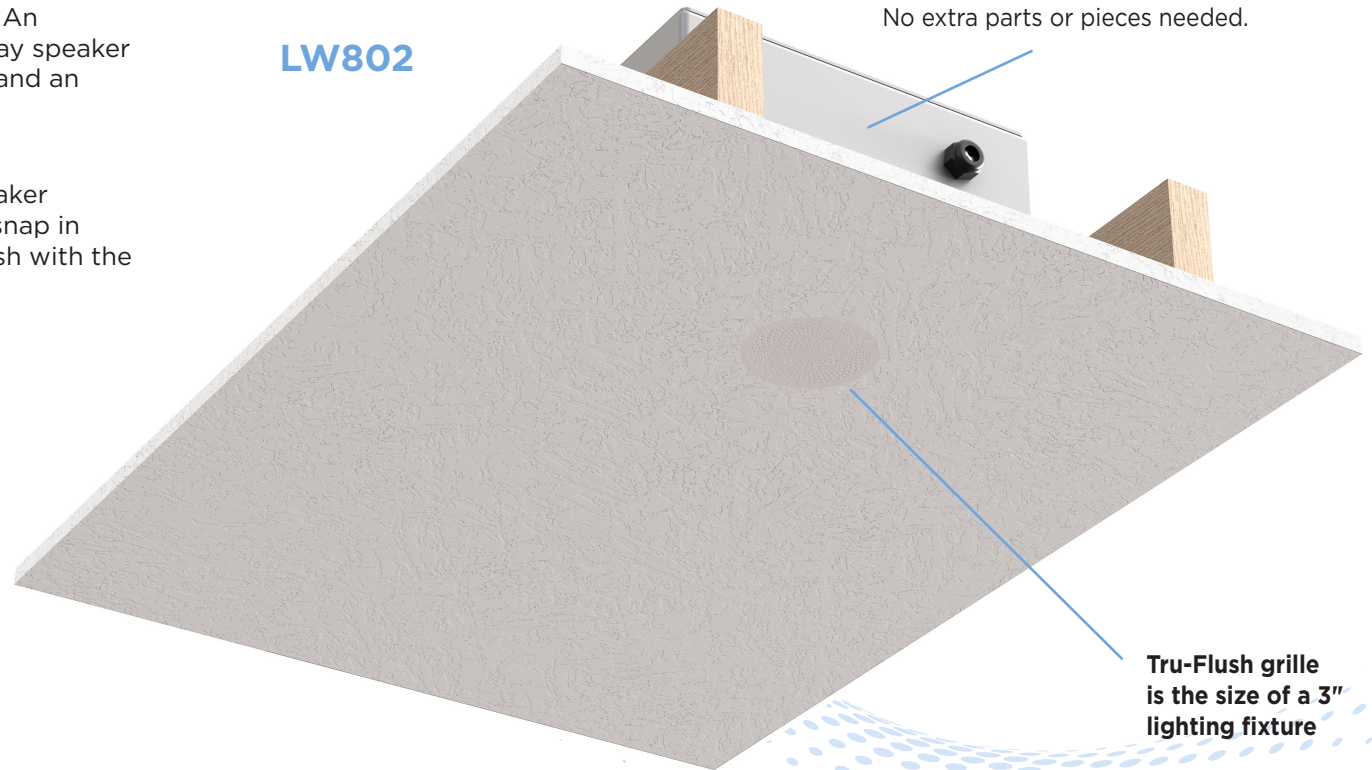
LW802 Integrated Speaker

Small grilles meets big performance. An impressive, full-range integrated 2-way speaker system with subwoofer-level output and an impressive high-frequency unit.

Easily the best looking in-ceiling speaker available. Magnetic Tru-Flush grilles snap in place after mudding, sit perfectly flush with the ceiling. No shadows, no protrusions.

LW802

Single integrated speaker ships complete.
No backbox, no separate mounting kit.
No extra parts or pieces needed.



Tru-Flush grille
is the size of a 3"
lighting fixture

LiveWall[□]

Small Grille Speaker

LW802

Tru-Flush grille is the size of a 3" lighting fixture

Powerful vented subwoofer section with bass to 35 Hz

Integrated mounting system fits all ceilings

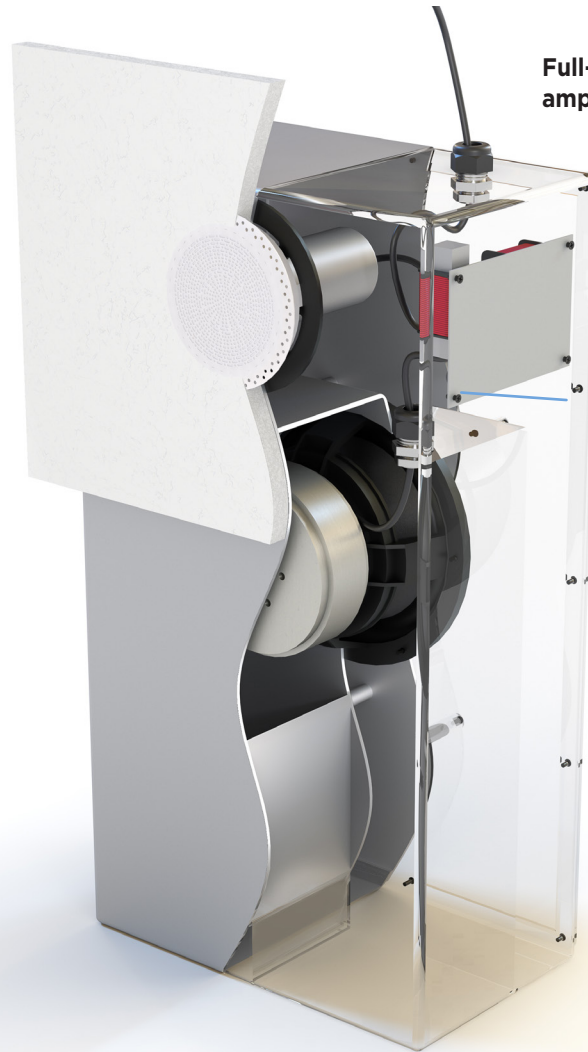
Full-range system uses one amplifier channel

Fully enclosed high-frequency driver with broad dispersion for room-filling sound

Fits drywall 1/2" and thicker

Audiophile crossover components with built-in protection circuitry

Machined aluminum cabinetry is stiff, thin, and fire-rated



LW802

LW802



Choose round or square Tru-Flush grille

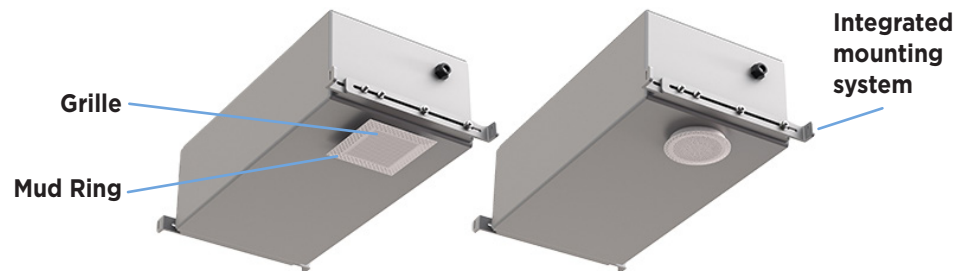
Elegant, paintable grilles have a unique perf pattern. Grilles and associated mounting hardware ship separately, are included in price.

Personalized grille designs available

Choose any pattern, any picture, any artwork for a one-off paintable grille. 4-piece minimum.

Installation Method

1. Install cabinet with integrated mounting rails
2. Drywall and mud
3. Pop on magnetic Tru-Flush grille



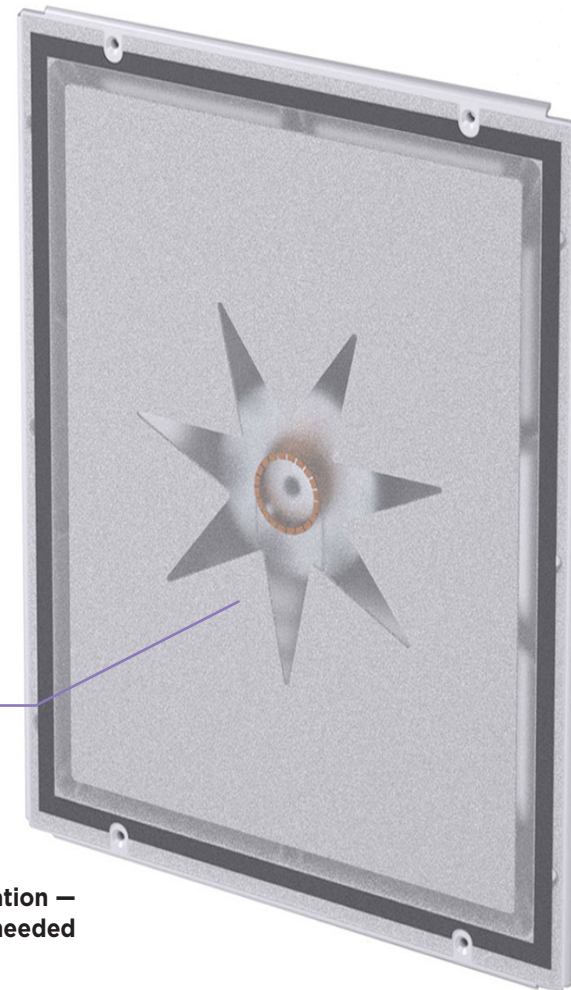
LW1210

Our third generation invisible speaker once again redefines the category, with improved sensitivity, smoother tonal balance, and greater impact. A patented 2-layer constrained diaphragm provides bass to 65 Hz, and high frequencies to 20k. No other invisible products on the market come close to the performance of Live-Wall.



LW1210 Backbox available

LW1210



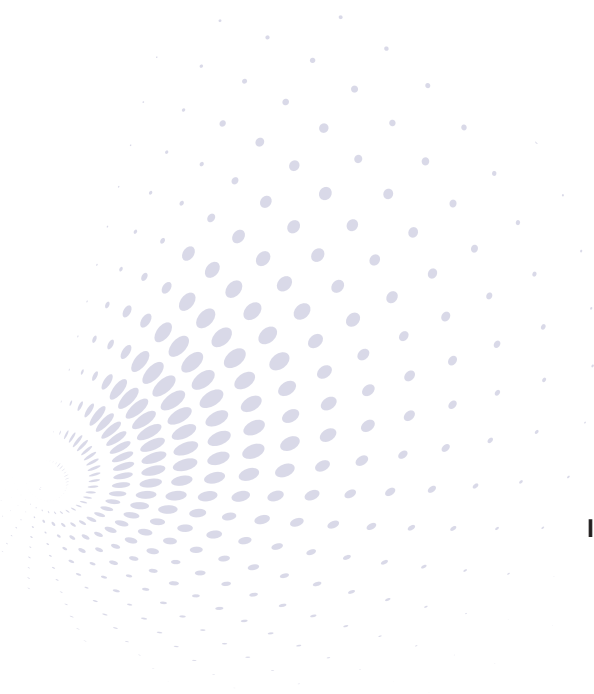
**High power handling — plays
louder than 8" in-ceiling
speakers**

**Full range operation —
no subwoofer needed**

LiveWall[®]

LW1220 AI

Our first constrained aluminum diaphragm design brings extra clarity and more impactful bass to the Live-Wall line. Greater sensitivity and high power handling means more music without relying on a large amplifier.



**Bass to 48 Hz for
full-range performance**

**Industry-leading performance
in an easy-to-install footprint**

**Aluminum diaphragm for greater
impact, tighter imaging**

Invisible Speakers



LW1220 AI

LiveWall[®]

LW1220 AI

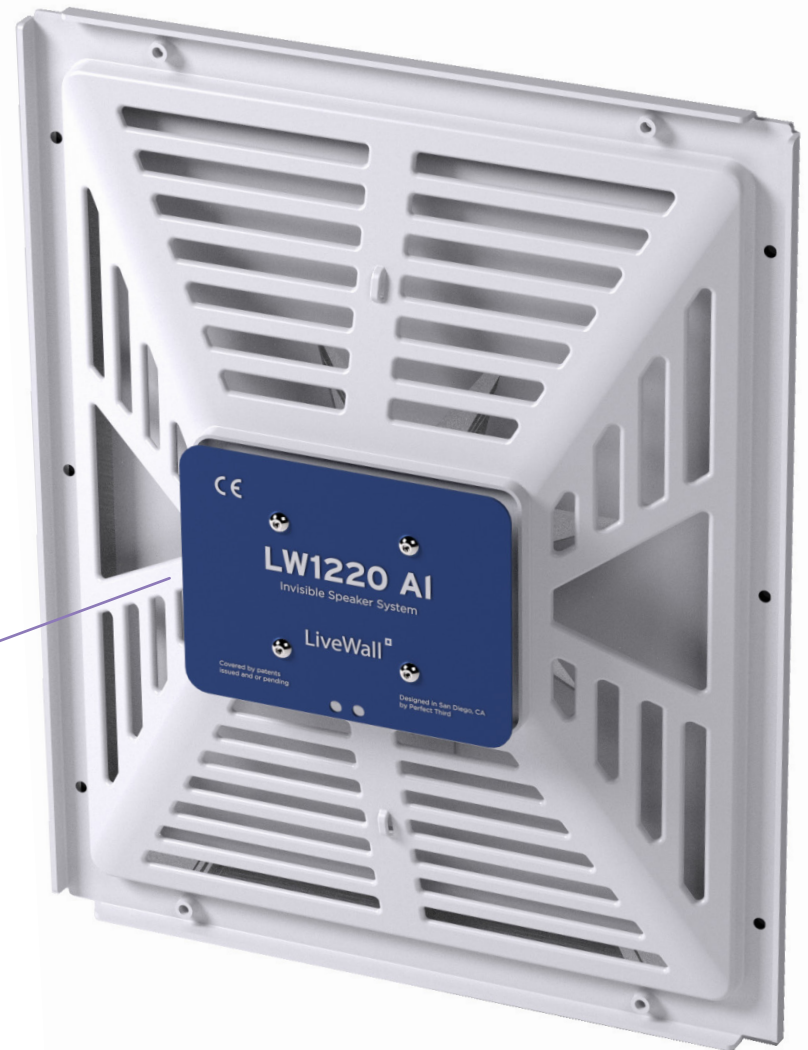
With performance that rivals high-end bookshelf speakers, the LW1220 AI leaves competitive invisible speakers far behind. Our patented constrained-layer design sandwiches two diaphragm materials — aluminum, and foamed polymers — each tuned for different areas in the frequency range. The result is a smooth, lifelike presentation you'd expect from a high-end bookshelf speaker.

High-precision molded frame
for decades of performance
without warping or
deformation

Hybrid ceramic/neodymium
motor structure for impressive
control and output

LW1220 Backbox available

Invisible Speakers



LW1220 AI

Custom-Built Theater Speakers

A magical home theater experience results from the combination of strong science and a touch of artistry. The PTM+ system includes loudspeakers with incredible headroom, stunningly low levels of distortion, and smooth off-axis dispersion. Manufactured with great care, these speakers are the technologically precise instruments you need to create the ultimate home theater.

- Flat response makes tuning more consistent in different size/shape rooms.
- Total Harmonic Distortion of less than 1% within the operating range (less than 10% in subs)
- Fully braced 1" MDF enclosures with black textured baffle
- Optional magnetic soft-focus grille

Ships in a standard black-textured finish. Veneers and other finishes available.

We've brought back the powerful PTM+ Series and are once again building these in San Diego.

Available with magnetic soft-focus grilles.



PTM+ Theater Speakers



Terms & Conditions

Integrator-Based Lifetime Warranty

LiveWall will repair or replace, for any LiveWall Integrator in good standing, any defects in materials or workmanship that occurs in normal use of a LiveWall speaker system without charge for parts. Excluded from this warranty is damage resulting from abuse, misuse, accidents, shipping, repairs, or modifications by anyone other than an authorized LiveWall service representative.

This warranty is void if the speaker system was not installed by an authorized LiveWall service provider.

This warranty gives the Integrator specific legal rights, and the Integrator may have other rights that vary from state to state.

In case of service, please contact your authorized LiveWall service provider.

If that is not possible contact us at:

619-800-0924

Sales@Live-Wall.com

Prices Are Subject To Change

LiveWall

Box 910651, San Diego, CA 92191 619-800-0924

Prices and specifications subject to change

Speakers protected by patents issued and/or pending. ©2025 LiveWall, LLC.